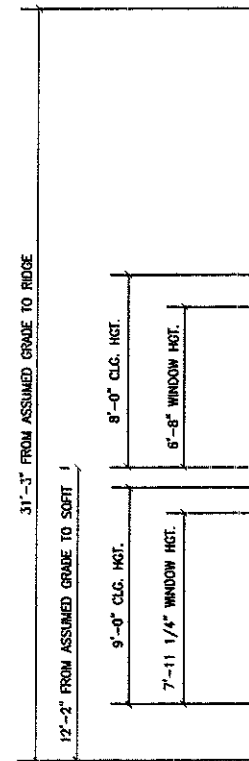



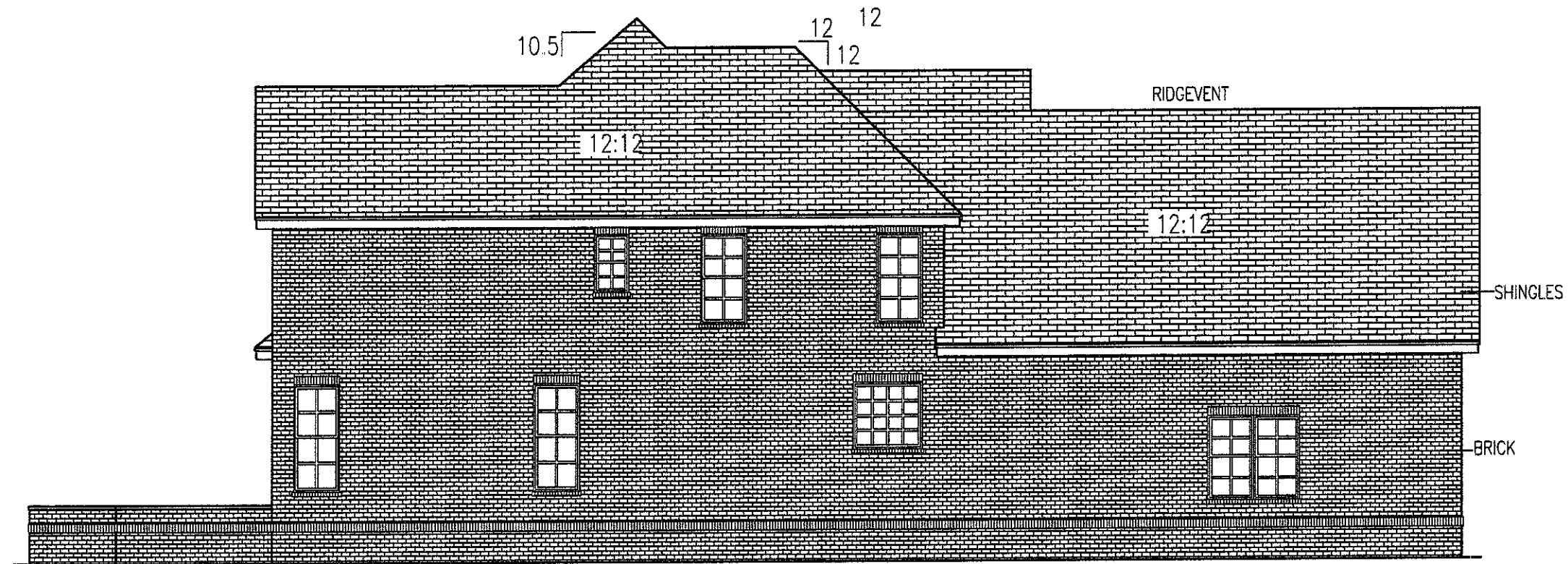
FRONT ELEVATION



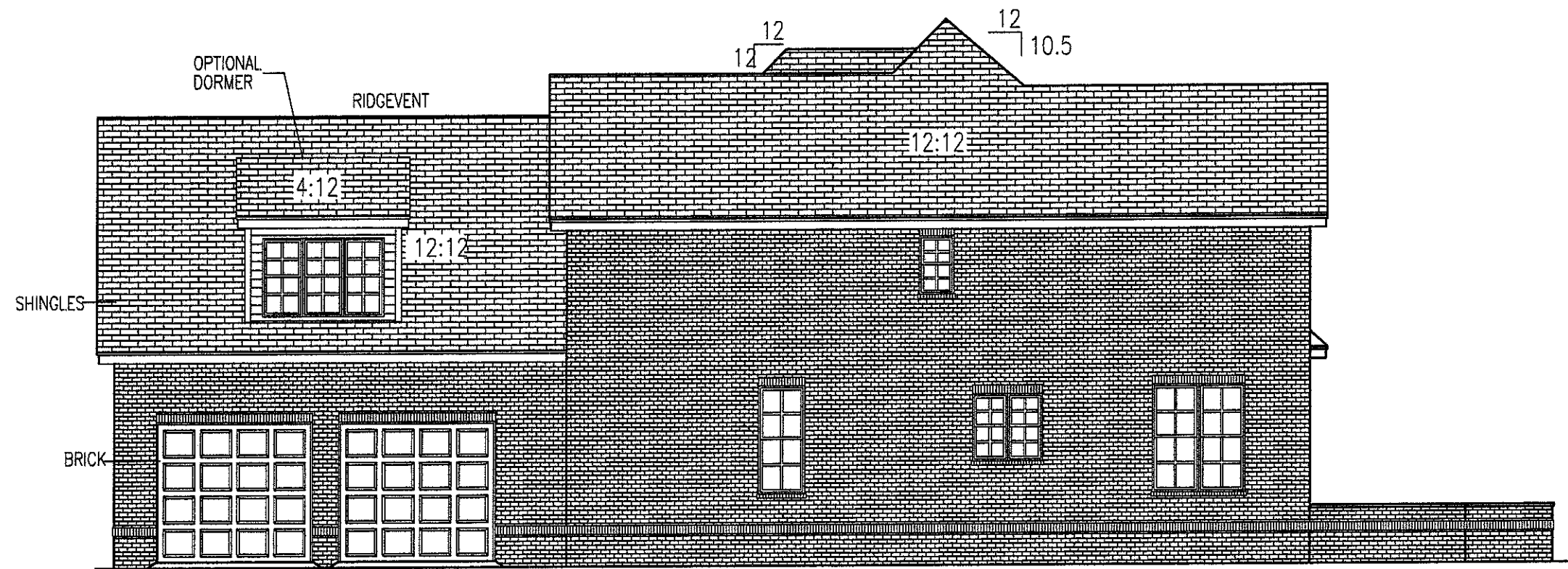
REAR ELEVATION




REVISIONS:	
4/7/04	
7/26/04	
10/06/04	
FRED SMITH COMPANY <small>400 REVERWOOD DRIVE CLAYTON, NC 27520 (919) 530-8086</small>	
 FRED SMITH COMPANY	
The Birkdale Extended Elevations	
FILE	
DESIGN	ADS
DRAWN	ADS
CHECKED	
DATE	1/15/04
SHEET	1

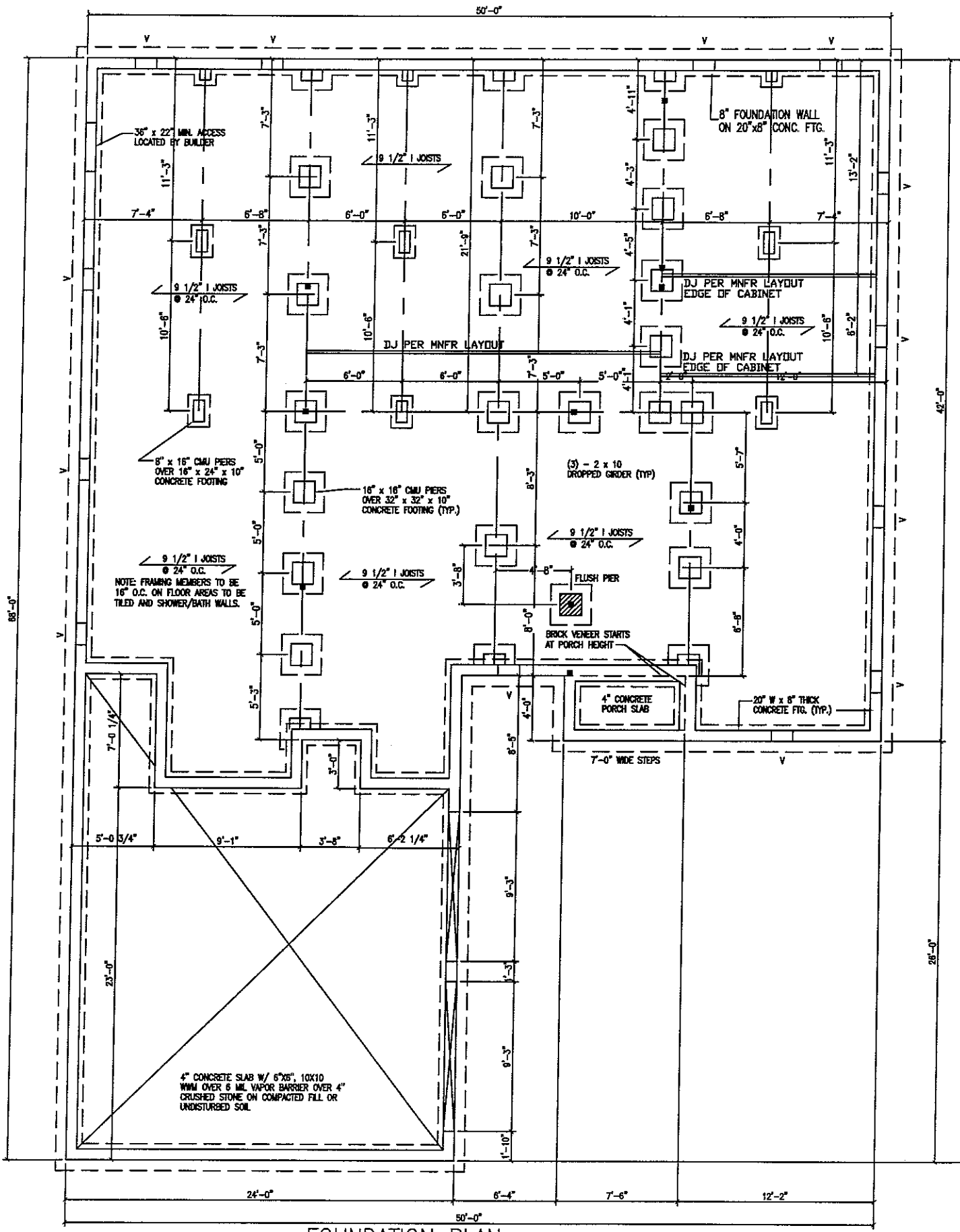


LEFT ELEVATION

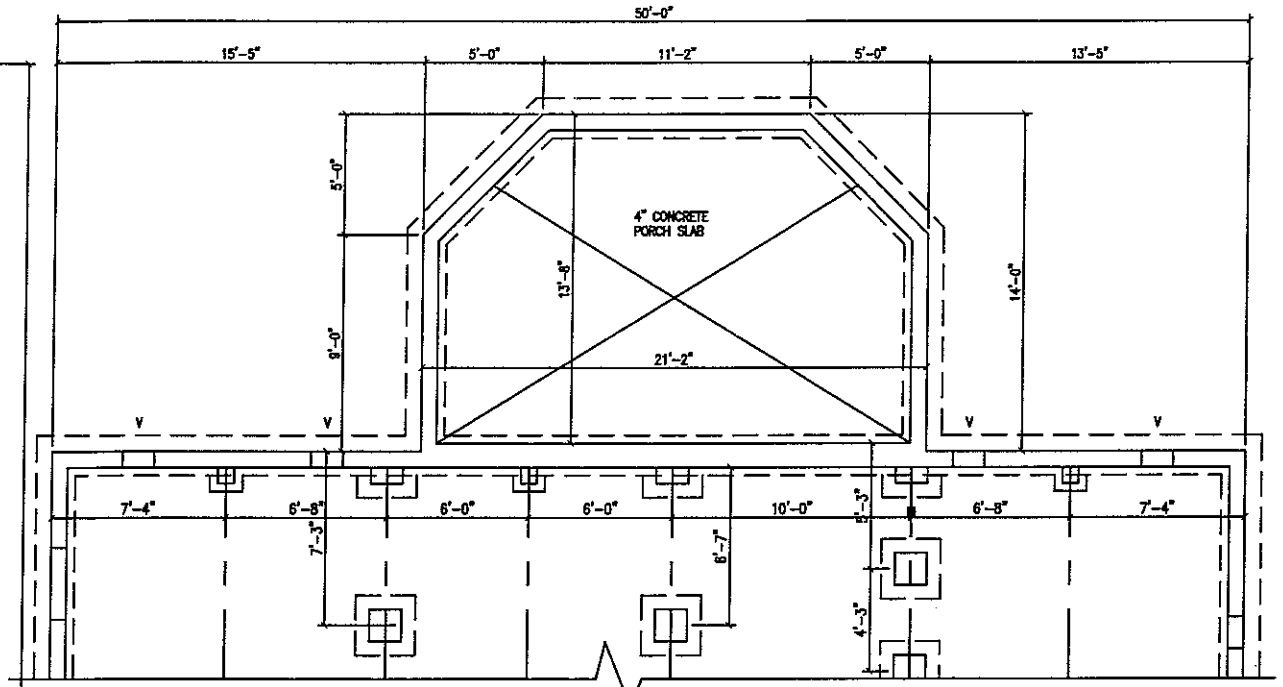


RIGHT ELEVATION

REVISIONS:	
4/7/04	
7/26/04	
<i>Handwritten</i>	
FRED SMITH COMPANY 400 RIVERWOOD DRIVE CLAYTON, NC 27526 (919) 556-8886	
 FRED SMITH COMPANY	
The Birkdale Extended Elevations	
FILE	
DESIGN	ADS
DRAWN	ADS
CHECKED	
DATE	1/15/04
SHEET	2



FOUNDATION PLAN

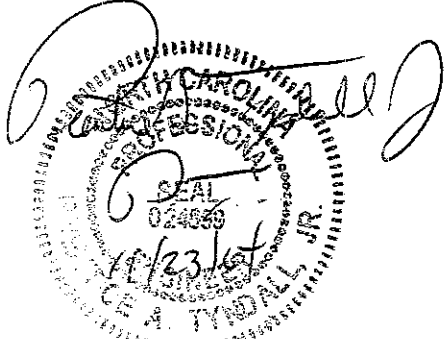


TERRACE FOUNDATION PLAN

- 16" x 16" CMU PIERS OVER 32" x 32" x 10" CONCRETE FOOTING (TYP.)
- 8" x 16" CMU PIERS OVER 16" x 24" x 10" CONCRETE FOOTING (TYP.)
- (3) - 2 x 10 DROPPED GIRDER (TYP.)

CRAWL SPACE VENTILATION	
REQUIRED	2162 SQ. FT. / 150 = 14.4 SQ. FT. OF VENTILATION
PROVIDED	0.6 SQ. FT. / VENT = 24 VENTS = 14.4 (SQ. FT. OF VENTILATION)
THE MINIMUM NET AREA OF VENTILATION OPENINGS SHALL NOT BE LESS THAN 1 SQ. FT. FOR EA. 150 SQ. FT. OF UNDER-FLOOR SPACE AREA. ONE SUCH VENTILATING OPENING SHALL BE WITHIN 3 FT. OF EA. CORNER OF SAID BUILDING.	

NOTE: BUILDER CAN REDUCE VENTING BY 50% IF .6 MIL VISQUEEN IS INSTALLED ON OVER 75% BUT NOT MORE THAN 80% OF CRAWL SPACE.



TYNDALL ENGINEERING & DESIGN
 100 Professional Court
 Garner, NC 27529
 Phone: (919) 773-1200
 Fax: (919) 773-9658

*Engineers seal applies only to structural components on this document. Seal does not include construction means, methods, techniques, sequences, or safety precautions.
 *Any deviations or discrepancies on plans are to be brought to the immediate attention of Tyndall Engineering & Design. Failure to do so will void Tyndall Engineering & Design's liability. Structural analysis based on NCR Residential Building Code 2002.

04CB-219

SCALE	
24" x 36"	= 1/4" = 1'-0"
11" x 17"	= 1/8" = 1'-0"

REVISIONS:	
3/17/04	
9/29/04	
10/06/04	

FRED SMITH COMPANY
 400 RIVERWOOD DRIVE
 CLAYTON, NC 27520 (919) 550-8086



**The Birkdale
 Extended
 Foundation
 Plan**

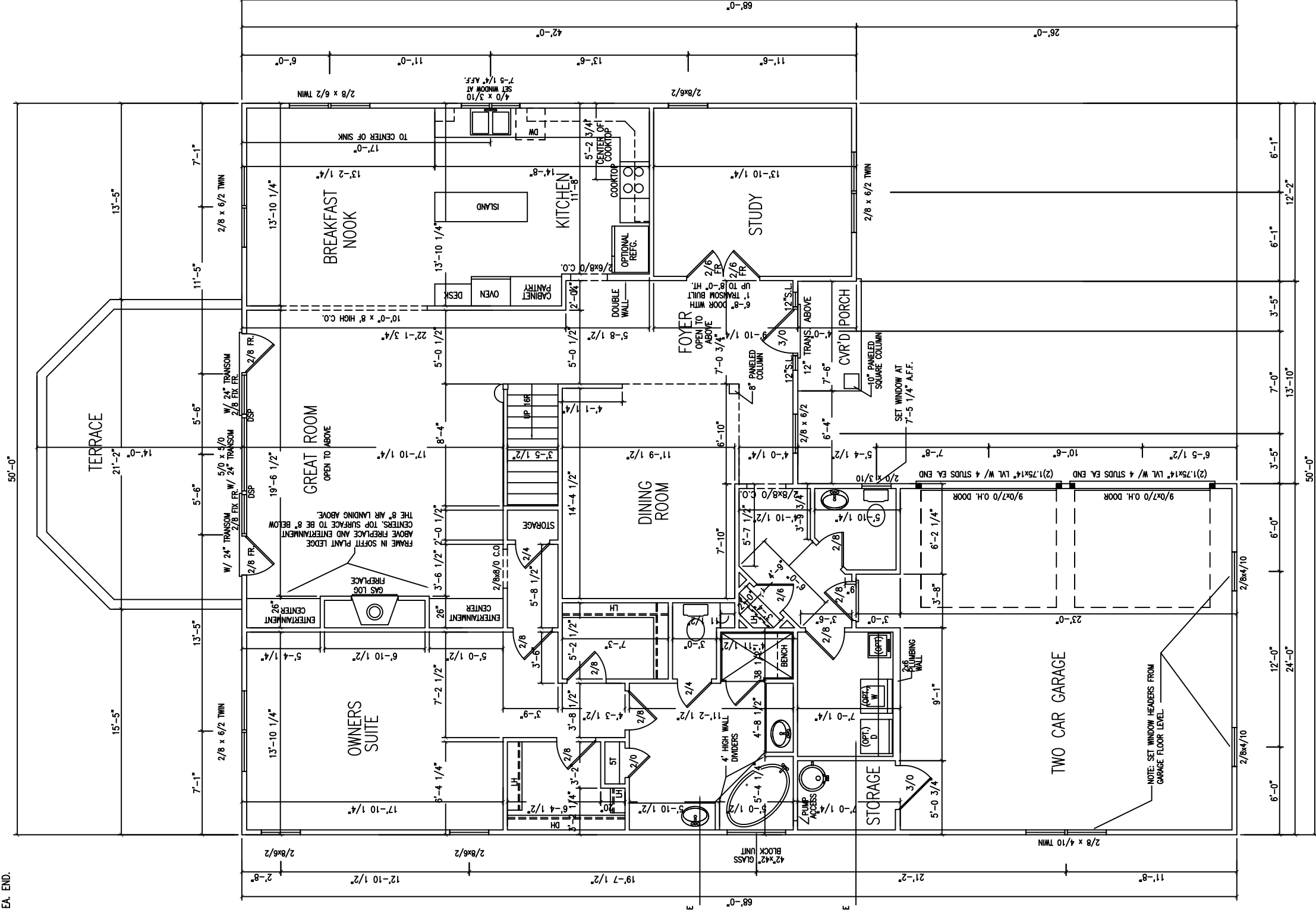
FILE	
DESIGN	ADS
DRAWN	MCC
CHECKED	ADS
DATE	1/15/04
SHEET	

SQUARE FOOTAGE	
1ST FLOOR	2140 SF
2ND FLOOR (STD)	1078 SF
TOTAL HTD. (STD)	3218 SF
EXTENDED 2ND FLOOR	1850 SF
TOTAL EXTENDED SF	3990 SF
GARAGE	563 SF
GARAGE STORAGE	36 SF
STORAGE	328 SF
FRONT PORCH	30 SF
TERRACE	271 SF

NOTES:

- 9'-0" C.L.G. HGT. (9'-1 1/2" PLT. HGT.) UNLESS OTHERWISE NOTED.
- ALL EXTERIOR WALLS FIGURED AT 4" NOMINAL WIDTHS UNLESS OTHERWISE NOTED.
- ALL INTERIOR WALLS FIGURED AT 3 1/2" WIDTHS UNLESS OTHERWISE NOTED.
- SET WINDOWS AT 7'-11 1/4" A.F.F. UNLESS OTHERWISE NOTED.
- DIMENSIONS ARE TO FRAMING UNLESS OTHERWISE NOTED.

STRUCTURAL NOTES:
 1) WHERE ANY GIRDER TRUSS SITS ON WALL ADD 4 STUDS @ EA. END.



FIRST FLOOR PLAN

SCALE
 24"X36" = 1/4"=1'-0"
 11"X17" = 1/8"=1'-0"

The Birkdale
 Extended
 1st Floor
 Plan

FILE
 DESIGN ADS
 DRAWN MCC
 CHECKED ADS
 DATE 1/15/04
 SHEET

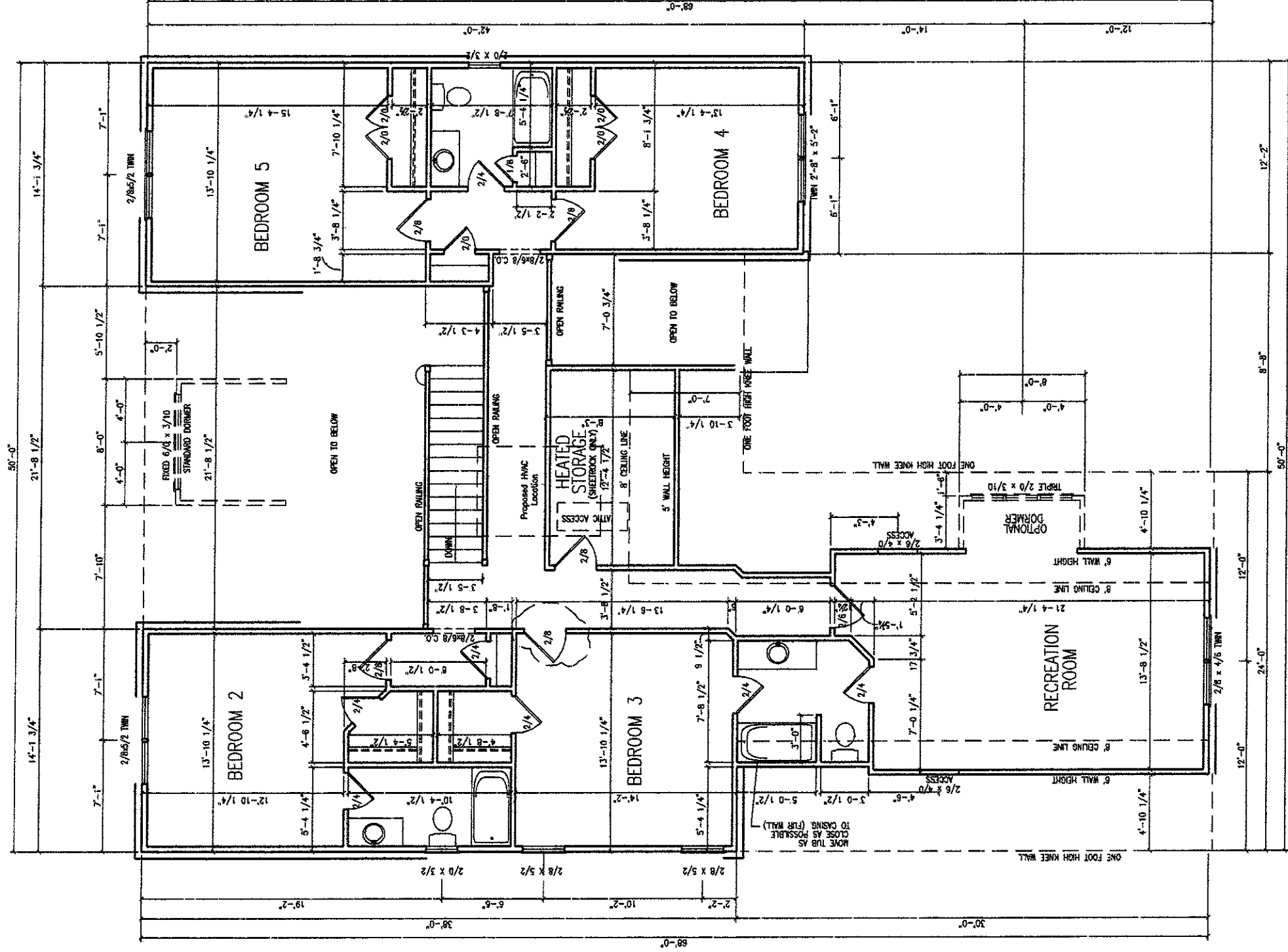
ANAPNOO HTLMS GEN



FRED SMITH COMPANY
 400 RIVERWOOD DRIVE
 CLAYTON, NC 27520 (919) 550-8086

REVISIONS:

4/7/04	
7/26/04	
9/29/04	
10/06/04	
1/28/05	



SECOND FLOOR PLAN

- NOTES:**
- 1) 8'-0" C.L.G. HGT. (8'-1 1/2" P.L.T. HGT.) UNLESS OTHERWISE NOTED.
 - 2) ALL EXTERIOR WALLS REQUIRED AT 4" NOMINAL WIDTHS UNLESS OTHERWISE NOTED.
 - 3) ALL INTERIOR WALLS REQUIRED AT 3 1/2" WIDTHS UNLESS OTHERWISE NOTED.
 - 4) SET WINDOWS AT 6'-0" A.F.F. UNLESS OTHERWISE NOTED.
 - 5) DIMENSIONS ARE TO FRAMING UNLESS OTHERWISE NOTED.

STRUCTURAL NOTES:
 1) WHERE ANY GROSS TRUSS SITS ON WALL ADD 4 STUDS @ EA. END.

SCALE
 1/4" = 1'-0"
 1/8" = 1'-0"

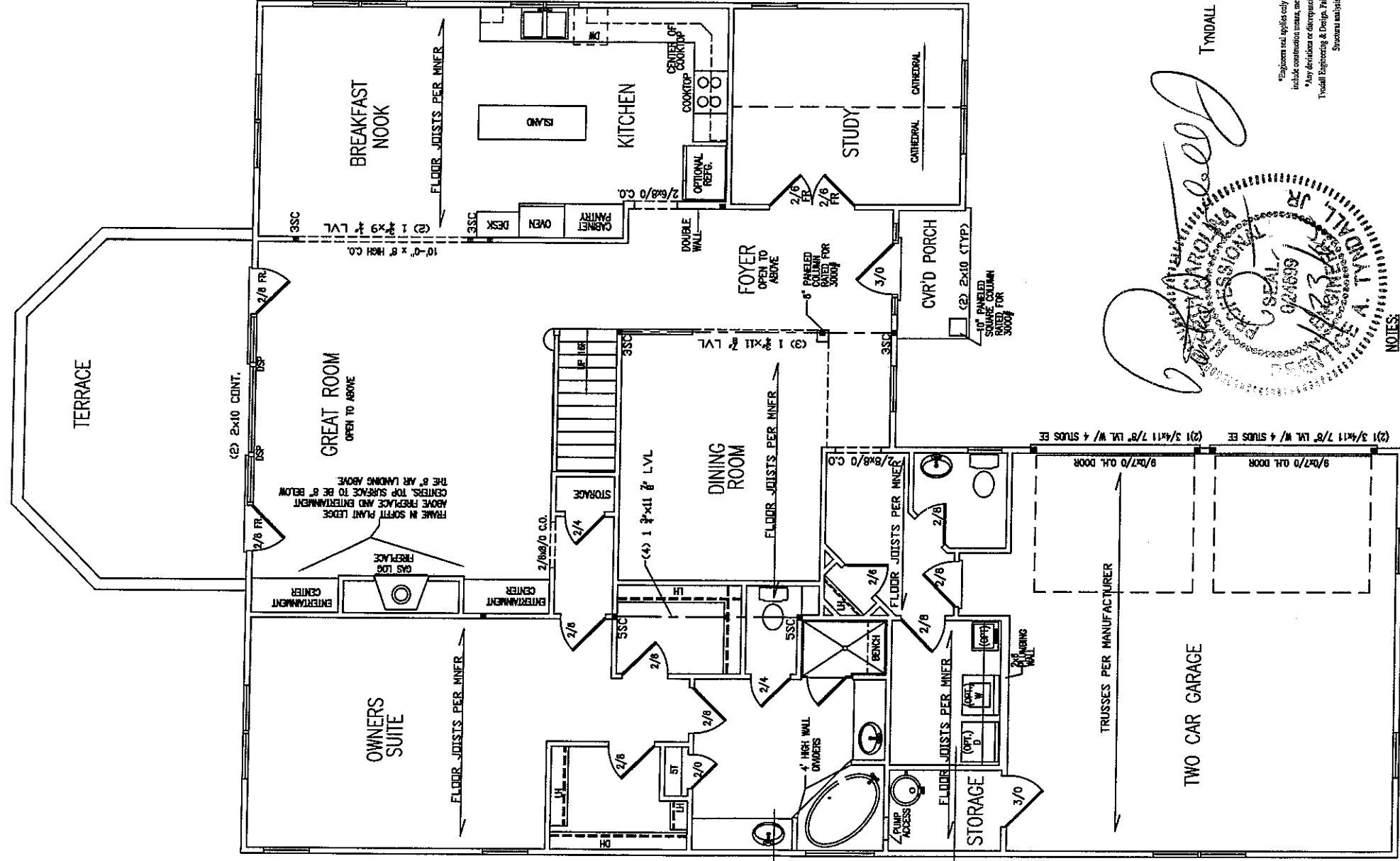
REVISIONS:

4/7/04	
7/26/04	
9/29/04	
10/06/04	
10/22/04	

FRED SMITH COMPANY
 400 RIVERWOOD DRIVE
 CLAYTON, NC 27520 (919) 550-8086

The Birkdale Extended 2nd Floor Plan

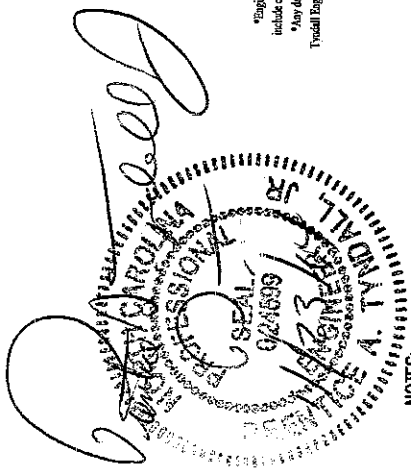
FILE
 DESIGN ADS
 DRAWN MCC
 CHECKED ADS
 DATE 1/15/04
 SHEET



NOTE: FRAMING MEMBERS TO BE 15\"/>

NOTE: FRAMING MEMBERS TO BE 15\"/>

TYNDALL ENGINEERING & DESIGN
 100 Piedmont Court
 Greensboro, NC 27409
 Phone: (919) 771-1200
 Fax: (919) 771-9658



*Engineer seal applies only to structural components on this document. Seal does not include construction means, methods, techniques, sequences, procedures or safety precautions.
 *Any deviations or discrepancies on plans are to be brought to the immediate attention of Tyndall Engineering & Design, P.O. Box 20, 100 Piedmont Court, Greensboro, NC 27409.
 Structures analyzed based on NC Standard Building Code (IBC).


04CB-219

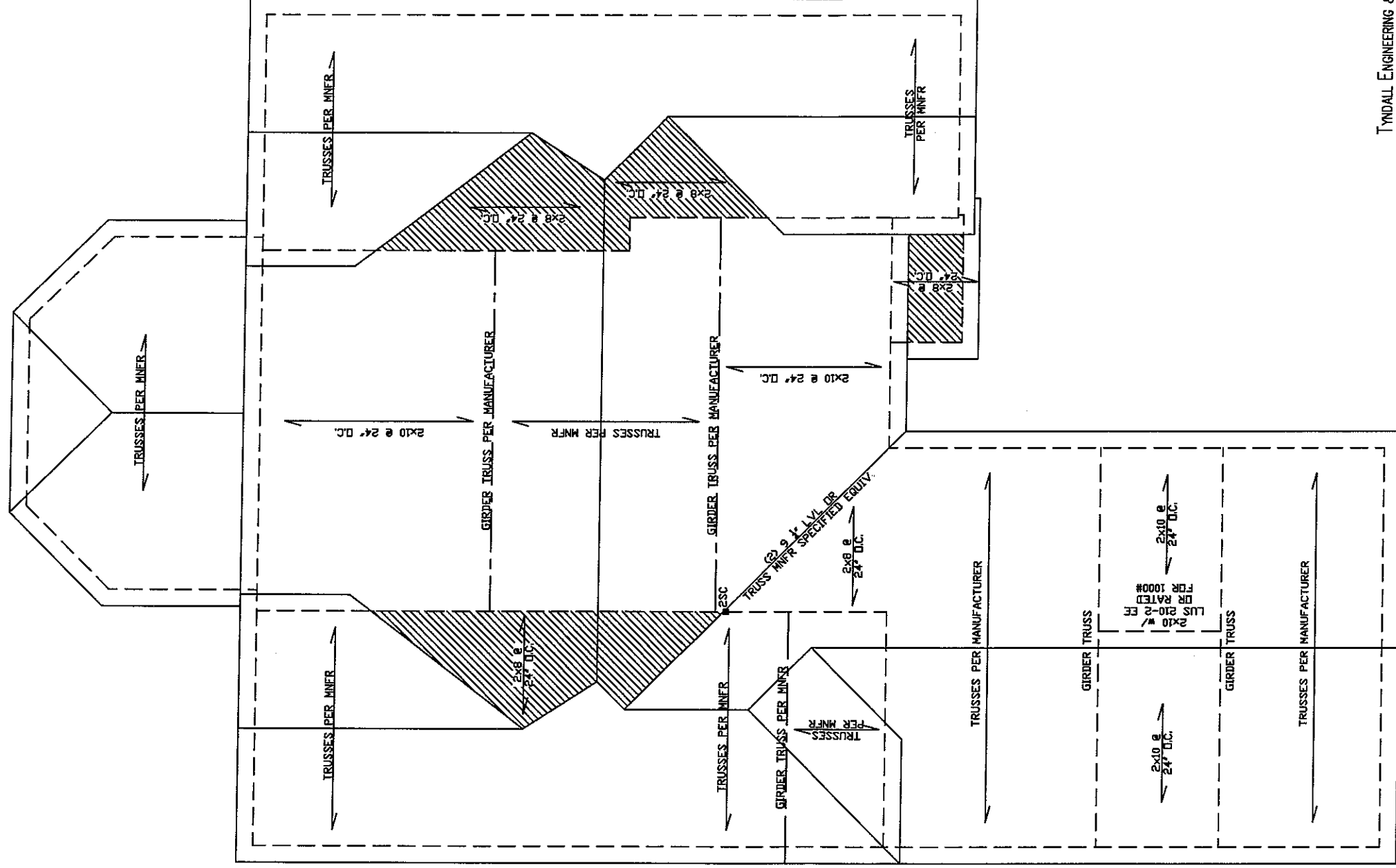
- NOTES:
- ALL LOAD BEARING HEADERS (2) 2x10 W/ (2) 2x4 JACK STUDS EACH END U.N.O
 - ALL EXTERIOR NON-LOAD BEARING HEADERS TO BE (2) 2x6 W/ (1) 2x4 JACK STUD EACH END
 - ALL INTERIOR NON-LOAD BEARING HEADERS TO BE FLAT 2x4
 - ALL LVL LUMBER TO BE 1.75\"/>
 - ALL EXTERIOR LUMBER TO BE #2 SYP PT
 - ALL CONC. $f_c = 3000$ PSI
 - PRESUMPTIVE BEARING CAPACITY = 2000 PSF
 - ALL T/J/PRO FLOOR JOISTS BY SUPPLIER
 - ALL ROOF TRUSSES BY SUPPLIER
 - PROVIDE CONTINUOUS SHEATHING PER IRC 2000/NC2002 SECTION 602.10

FIRST FLOOR STRUCTURAL PLAN

SCALE
 24'x36' = 1/4"=1'-0"
 11'x17' = 1/8"=1'-0"

The Birkdale Extended 1st Floor Plan	
FILE	
DESIGN	ADS
DRAWN	MCC
CHECKED	ADS
DATE	1/15/04
SHEET	4

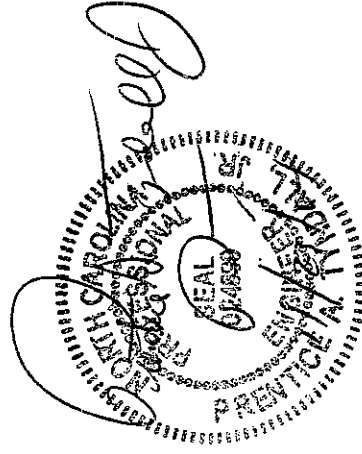
REVISIONS:	
4/7/04	
7/26/04	
9/29/04	
10/06/04	
 FRED SMITH COMPANY 400 RIVERWOOD DRIVE CLAYTON, NC 27520 (919) 550-8086	



TYNDALL ENGINEERING & DESIGN

100 Professional Court
 Garner, NC 27839
 Phone: (919) 775-1200
 Fax: (919) 775-2688
 *Engineer not applicable to structural components on this document. Seal does not include construction means, methods, techniques, sequences or safety precautions.
 **Any deviations or discrepancies on plan are to be brought to the immediate attention of Tyndall Engineering & Design. Failure to do so will void Tyndall Engineering & Design liability.
 Document analyzed based on International Building Code 2002.

04CB-219



ROOF LAYOUT

SCALE
 24'x36" = 1/4"=1'-0"
 11'x17" = 1/8"=1'-0"

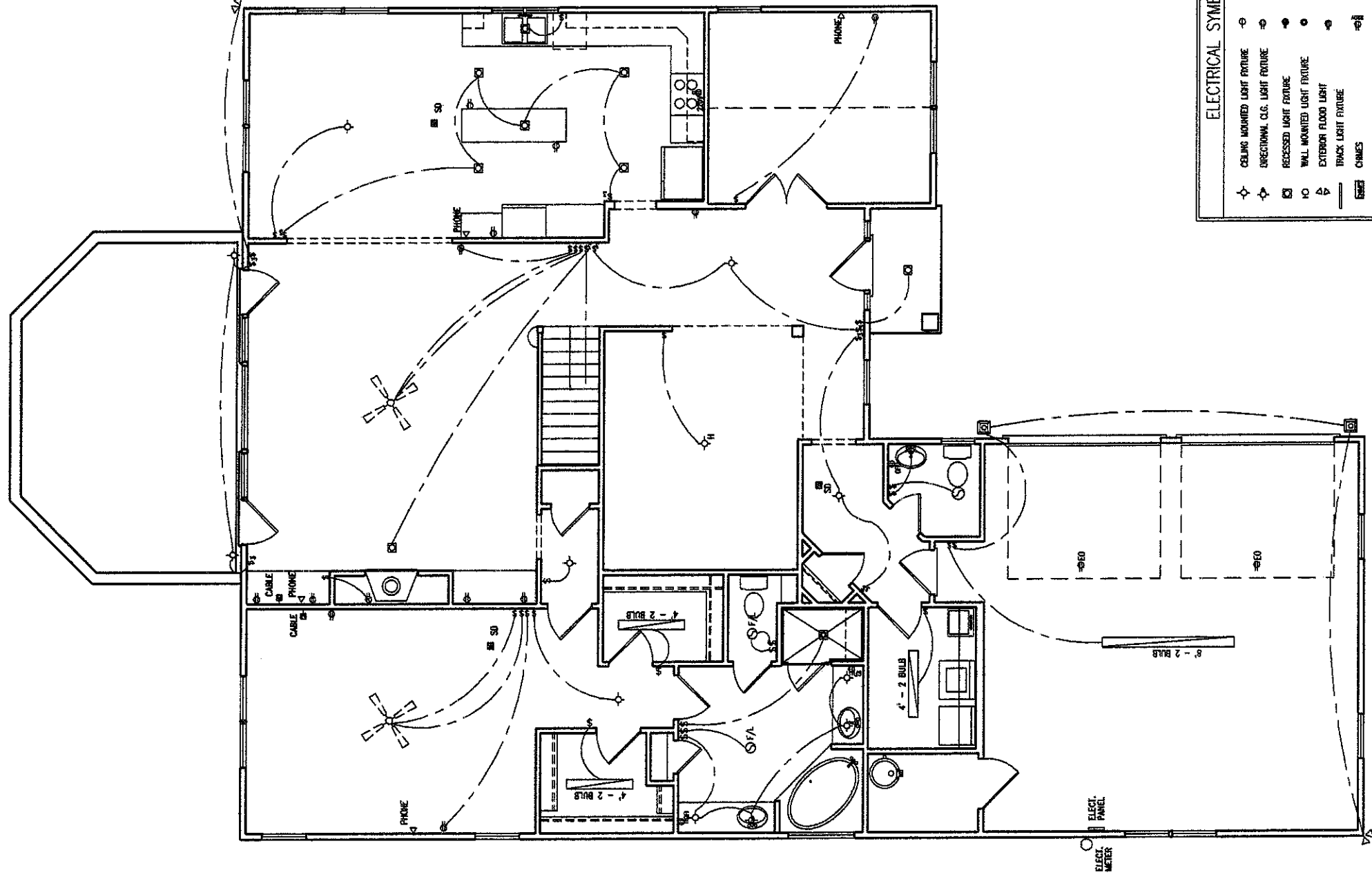
The Birkdale
 Extended
 1st Floor
 Plan

FILE	
DESIGN	ADS
DRAWN	MCC
CHECKED	ADS
DATE	1/15/04
SHEET	

REVISIONS:	
4/7/04	
7/26/04	
9/29/04	
10/06/04	

FRED SMITH COMPANY
 400 RIVERWOOD DRIVE
 CLAYTON, NC 27520 (919) 550-8086

FRED SMITH COMPANY



FIRST FLOOR ELECTRICAL PLAN

ELECTRICAL SYMBOLS			
⊕	CILING MOUNTED LIGHT FIXTURE	⊕	SINGLE RECEPTACLE OUTLET
⊕	DIRECTIONAL C.L.G. LIGHT FIXTURE	⊕	DUPLEX RECEPTACLE OUTLET
⊕	RECESSED LIGHT FIXTURE	⊕	QUAMPLEX RECEPTACLE OUTLET
⊕	WALL MOUNTED LIGHT FIXTURE	⊕	FLOOR OUTLET
⊕	EXTERIOR FLOOD LIGHT	⊕	DUPLEX RECEPTACLE OUTLET
⊕	TRACK LIGHT FIXTURE	⊕	SPLIT USED
⊕	CHIMES	⊕	220 VOLT OUTLET
⊕	SINGLE POLE WALL SWITCH	⊕	WATER PROOF OUTLET
⊕	3-WAY POLE WALL SWITCH	⊕	TELEPHONE OUTLET
⊕	FOUR-WAY SWITCH	⊕	TV OUTLET
⊕	GROUND FAULT INTERCEPTOR	⊕	GROUND FAULT INTERCEPTOR
⊕	WATER PROOF SWITCH	⊕	RECESSED LIGHT FIXTURE
⊕	DIMMER SWITCH	⊕	ANGLE CUT
⊕	TIMER SWITCH	⊕	PULL CHAIN LIGHT FIXTURE
⊕	FLUORESCENT LIGHT	⊕	FLUORESCENT LIGHT BOX
⊕	ELECTRICAL OUTLET	⊕	CEILING FAN
⊕	DOOR OPENER	⊕	EXHAUST FAN
⊕	HANGING LIGHT FIXTURE	⊕	SMOKE DETECTOR
⊕	CEILING FAN/LIGHT	⊕	EXHAUST FAN/LIGHT
⊕		⊕	SHOWER LIGHT

NOTE:
 (1) ALL RECEPTACLE PLACEMENT TO CODE.
 (2) PLEASE NOTE RECEPTACLE PLACEMENT PER FSC.

ELECTRICAL
 ITEMS ARE SHOWN BY GENERAL POSITION, DETERMINE SPECIFIC LOCATIONS ON SITE.

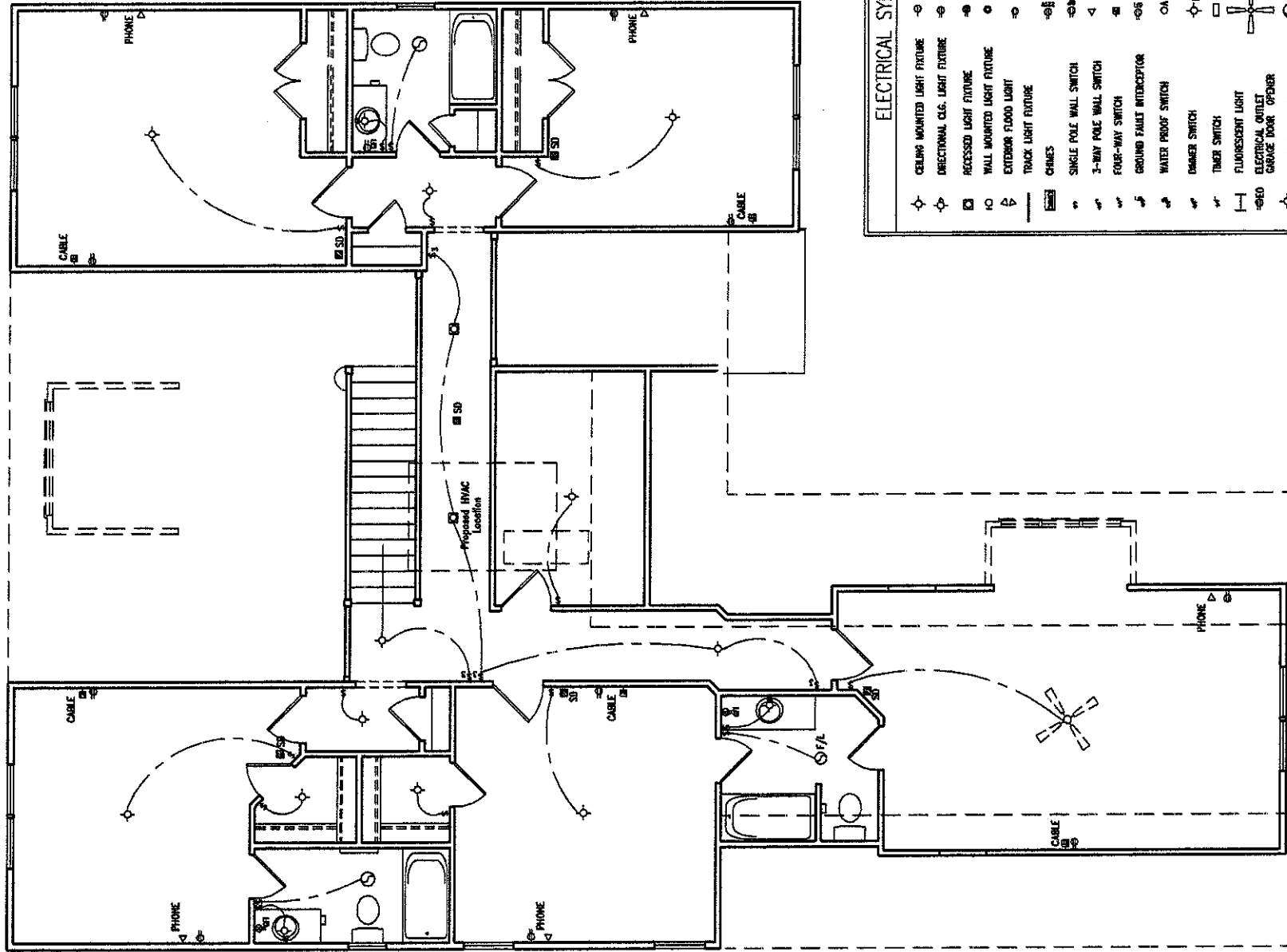
SCALE
 24"X36" = 1/4"=1'-0"
 11"X17" = 1/8"=1'-0"

**The Birkdale
 Extended
 Electrical
 Plan**

FILE
 DESIGN ADS
 DRAWN MCC
 CHECKED ADS
 DATE 1/15/04
 SHEET

FRED SMITH COMPANY
 400 RIVERWOOD DRIVE
 CLAYTON, NC 27520 (919) 550-8086

REVISIONS:	
4/7/04	
9/29/04	
10/06/04	



ELECTRICAL SYMBOLS

⊕	CEILING MOUNTED LIGHT FIXTURE	⊕	SINGLE RECEPTACLE OUTLET
⊕	DIRECTIONAL C.L.G. LIGHT FIXTURE	⊕	DUPLEX RECEPTACLE OUTLET
⊕	RECESSED LIGHT FIXTURE	⊕	QUADRUPEX RECEPTACLE OUTLET
⊕	WALL MOUNTED LIGHT FIXTURE	⊕	FLOOR OUTLET
⊕	EXTENSOR FLOOD LIGHT	⊕	DUPLEX RECEPTACLE OUTLET SPLIT USED
⊕	TRACK LIGHT FIXTURE	⊕	220 VOLT OUTLET
⊕	CABLES	⊕	WATER PROOF OUTLET
⊕	SINGLE POLE WALL SWITCH	⊕	TELEPHONE OUTLET
⊕	3-WAY POLE WALL SWITCH	⊕	TV OUTLET
⊕	FOUR-WAY SWITCH	⊕	GROUND FAULT INTERRUPTOR
⊕	GROUND FAULT INTERRUPTOR	⊕	RECESSED LIGHT FIXTURE ANGLE CUT
⊕	WATER PROOF SWITCH	⊕	PC PULL CHAIN LIGHT FIXTURE
⊕	DIMMER SWITCH	⊕	FLUORESCENT LIGHT BOX
⊕	TIMER SWITCH	⊕	CEILING FAN
⊕	FLUORESCENT LIGHT	⊕	EXHAUST FAN
⊕	ELECTRICAL OUTLET OPERATOR	⊕	SMOKE DETECTOR
⊕	GARAGE DOOR OPENER	⊕	EXHAUST FAN/LIGHT
⊕	HANGING LIGHT FIXTURE	⊕	SHOWER LIGHT
⊕	CEILING FAN/LIGHT		

SECOND FLOOR ELECTRICAL PLAN

ELECTRICAL
 ITEMS ARE SHOWN BY GENERAL POSITION. DETERMINE SPECIFIC LOCATIONS ON SITE.

SCALE
 $24' \times 36' = 1/4" = 1'-0"$
 $11' \times 17' = 1/8" = 1'-0"$

REVISIONS:	
4/7/04	
7/26/04	
9/29/04	
10/05/04	
FRED SMITH COMPANY	
499 RIVERWOOD DRIVE CLAYTON, NC 27520 (919) 550-8086	
The Birkdale Extended	
FILE	
DESIGN	ADS
DRAWN	MCC
CHECKED	ADS
DATE	1/15/04
SHEET	